



Supporting Information

고분자 사슬의 형태 변화에 따른 Layer-by-Layer 조립된 (PDDA/PEDOT:PSS) 다층박막 표면 형상의 영향

박수현*, 구민수*[†]
*동아대학교 화학공학과

Effect on Surface Morphology of Layer-by-Layer Assembled (PDDA/PEDOT:PSS) Multilayer Thin Films by Conformation Change of Polymer Chains

Suhyun Park*, and Minsu Gu*[†]

* Department of Chemical Engineering (BK21 FOUR), Dong-A University, Busan 49315, Republic of Korea

Keywords: layer-by-layer assembly, thin film, PDDA, PEDOT:PSS, polyelectrolytes

[†]Corresponding Author:
E-mail: sbgms@dau.ac.kr
Tel: (+) 51-200-5835

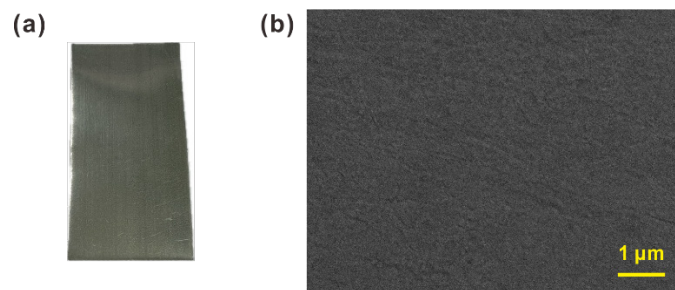


Figure S1. (a) Photograph and (b) SEM image of bare Zn substrate.

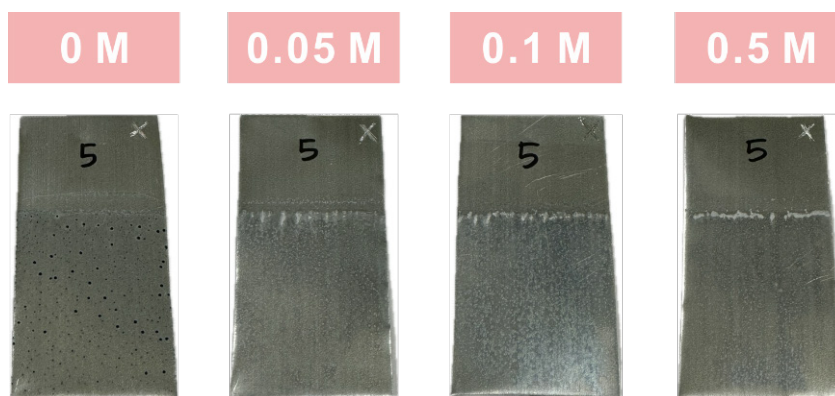


Figure S2. Photographs of LbL assembled (PDDA/PEDOT:PSS)₅ concentrations of 5 mg/mL with varying concentrations of NaCl (0, 0.05, 0.10, and 0.50 M) in PEDOT:PSS solution.

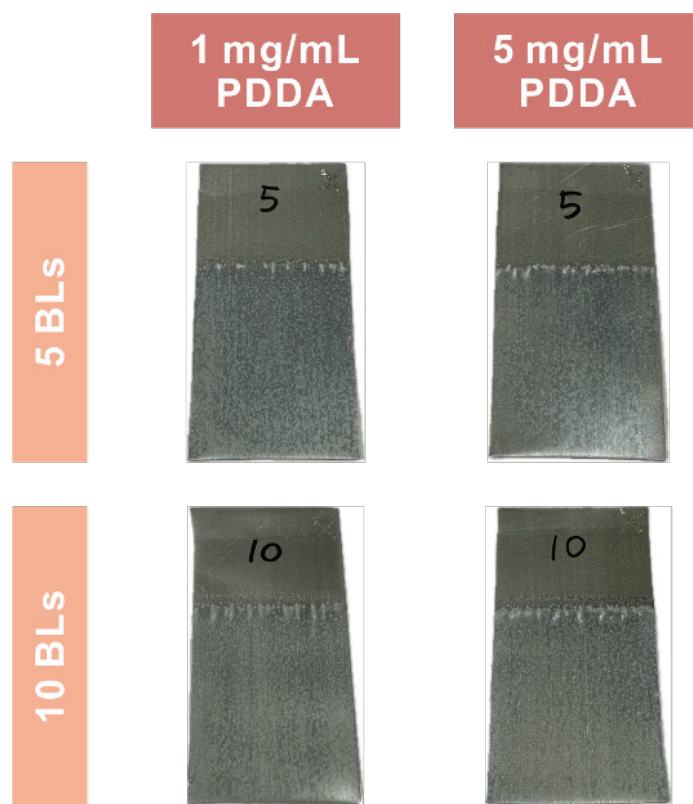


Figure S3. Photographs of LbL assembled (PDDA/PEDOT:PSS)_n with 0.10 M NaCl in 5 mg/mL PEDOT:PSS solution.